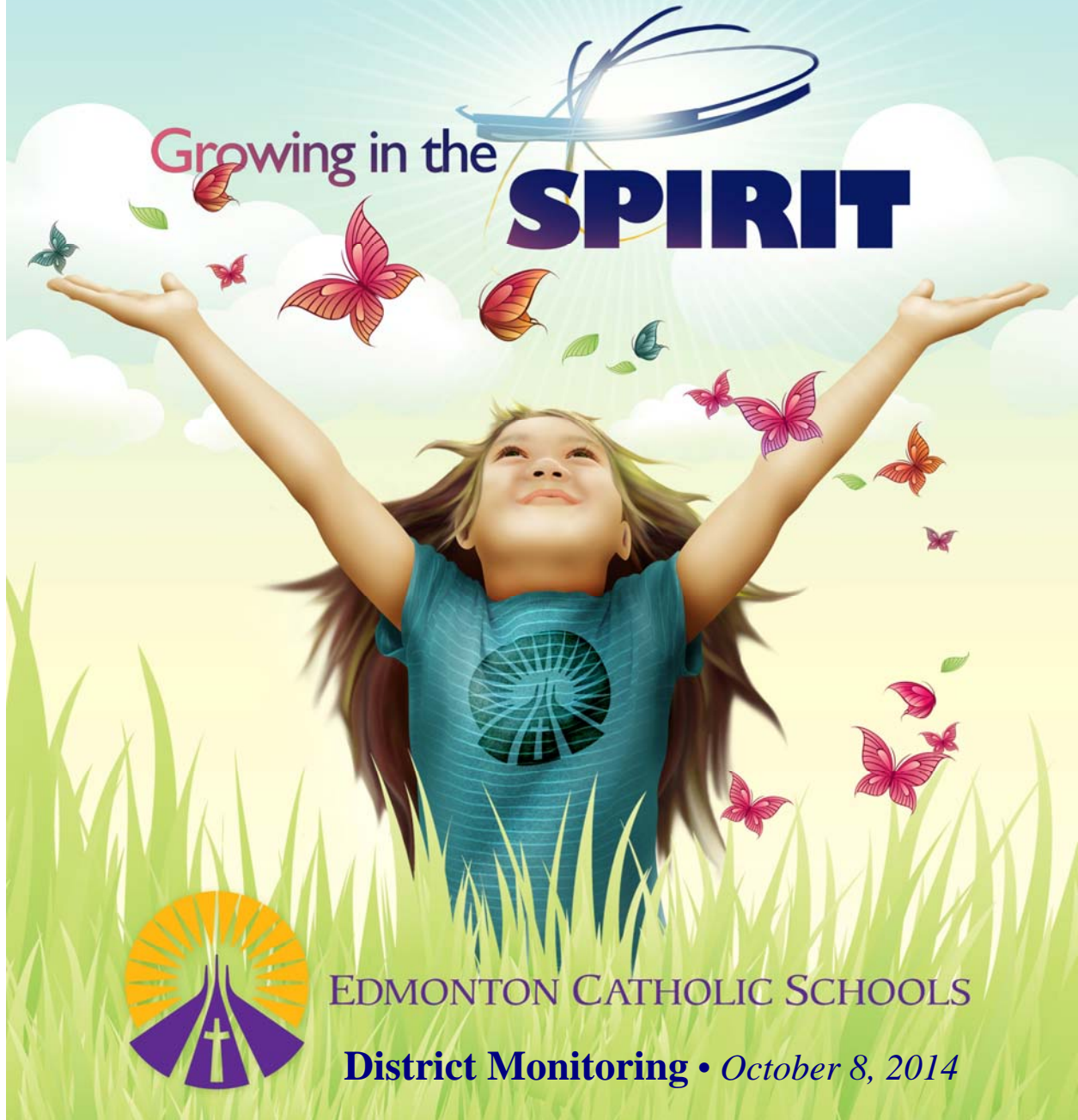


Diploma Examination Results District Report 2013/2014 School Year

Growing in the

SPIRIT



EDMONTON CATHOLIC SCHOOLS

District Monitoring • *October 8, 2014*

EDMONTON CATHOLIC SCHOOLS DIPLOMA EXAMINATION PROGRAM 2013/2014 SCHOOL YEAR

1. OUR PHILOSOPHY OF STUDENT ACHIEVEMENT

Catholic education embraces the belief that all students can learn and develop their gifts. Edmonton Catholic Schools approaches all measures of student success from within this philosophical framework. A high value is placed on diploma examinations within the context of a vast array of qualitative, quantitative, and informal measures of student success. These are in place to ensure that students are given the highest quality Catholic education and, in turn, the best opportunities to embrace their God-given gifts, talents, and potential in school and beyond.

2. BACKGROUND

The Diploma Examination Program was established by Alberta Education in 1984 to assist in the development and maintenance of excellence in educational standards. The purposes of this program are to certify the level of individual student achievement in selected grade 12 courses, to ensure that the provincial standards of achievement are maintained, and to report individual and group results. Edmonton Catholic Schools' goal is to exceed provincial standards.

To receive a high school diploma, students are required to write at least two diploma examinations, either English Language Arts 30-1 or 30-2 and either Social Studies 30-1 or 30-2. In addition to one English course and one Social Studies diploma exam, students in Francophone programs present one of the Français exams to meet their language arts requirement. Francophone or French Immersion students must use the French translation of a diploma exam and respond in French in order to have their transcripts show that the language of examination was French.

The following courses had diploma examinations (*) and most of them had a French translation (*) available upon request:

- English Language Arts 30-1
- English Language Arts 30-2
- Social Studies 30-1*
- Social Studies 30-2*
- Français 30-1
- French Language Arts 30-1
- Mathematics 30-1*
- Mathematics 30-2*
- Biology 30*
- Chemistry 30*
- Physics 30*
- Science 30

In order to obtain credit for a diploma examination course, students must write the appropriate diploma examination and obtain a final course mark of 50% or higher. A student's final course mark is usually determined by averaging the mark obtained on the diploma examination with the school-awarded mark. There are some exceptions to this, for example, for students with mature status. The final course mark is sometimes referred to as the final blended mark.

When reviewing examination results, differences between school-awarded marks and the diploma examination marks are expected. These two measures of achievement are complementary. The diploma examination provides a common measure of achievement for all students across the province. The school-awarded mark reflects *all* aspects of course learning, much of which is not measurable through pencil and paper tests.

Results are not released to the public when fewer than six students wrote the examination. In 2013/2014, no students from our District wrote the Français 30-1 exam.

3. SUMMARY OF THE DIPLOMA EXAMINATION PROGRAM RESULTS

A. AVERAGES FOR SCHOOL-AWARDED, DIPLOMA, AND FINAL COURSE MARKS

Student averages from Edmonton Catholic Schools were compared to the provincial averages for the school-awarded marks, diploma examination marks, and final course marks (Table 1 in Appendix A).

- SCHOOL-AWARDED MARKS**
- Edmonton Catholic students **exceeded** the provincial average school-awarded marks in **four** subjects:
 - English Language Arts 30-1
 - English Language Arts 30-2
 - Social Studies 30-1
 - Social Studies 30-2
- DIPLOMA MARKS**
- Edmonton Catholic students **exceeded** the provincial average diploma marks in **four** subjects:
 - English Language Arts 30-1
 - English Language Arts 30-2
 - Mathematics 30-2
 - Science 30
- FINAL COURSE MARKS**
- Edmonton Catholic students **exceeded** the provincial average final course marks in **four** subjects:
 - English Language Arts 30-1
 - English Language Arts 30-2
 - Social Studies 30-1
 - Science 30
 - Edmonton Catholic Schools exceeded the provincial final course averages the most in English Language Arts 30-2 where the difference was 1.1%.

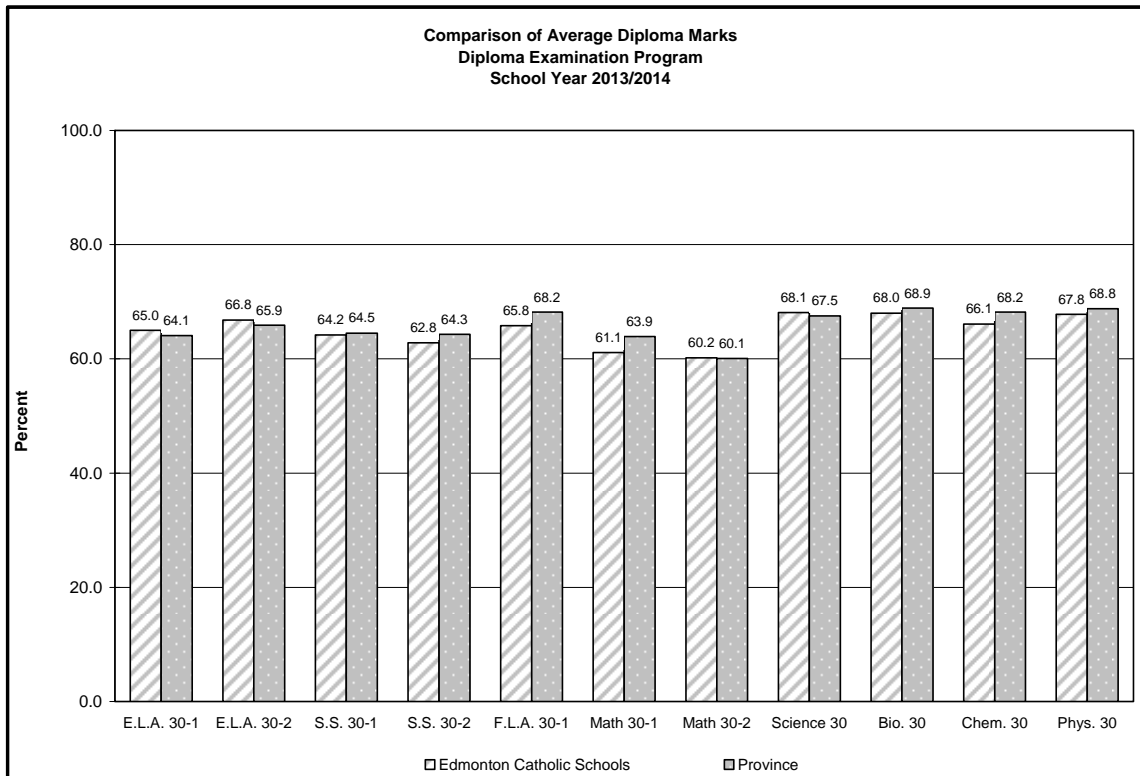
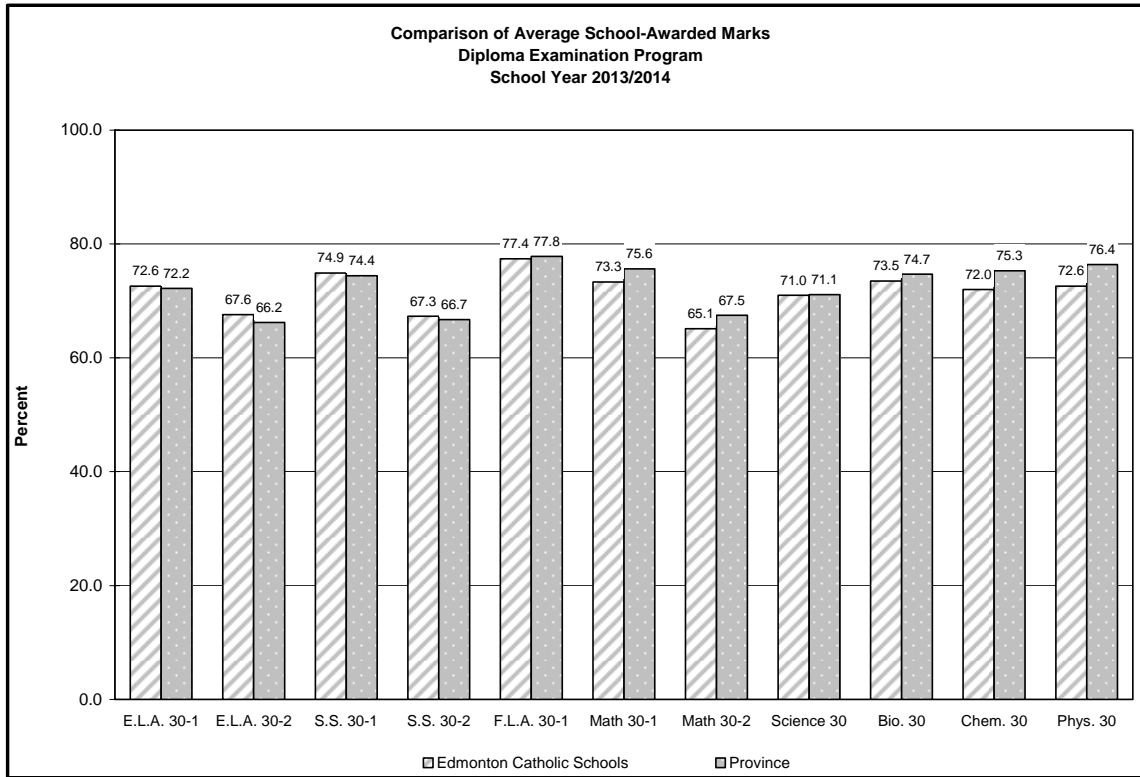
B. ACCEPTABLE STANDARD AND STANDARD OF EXCELLENCE

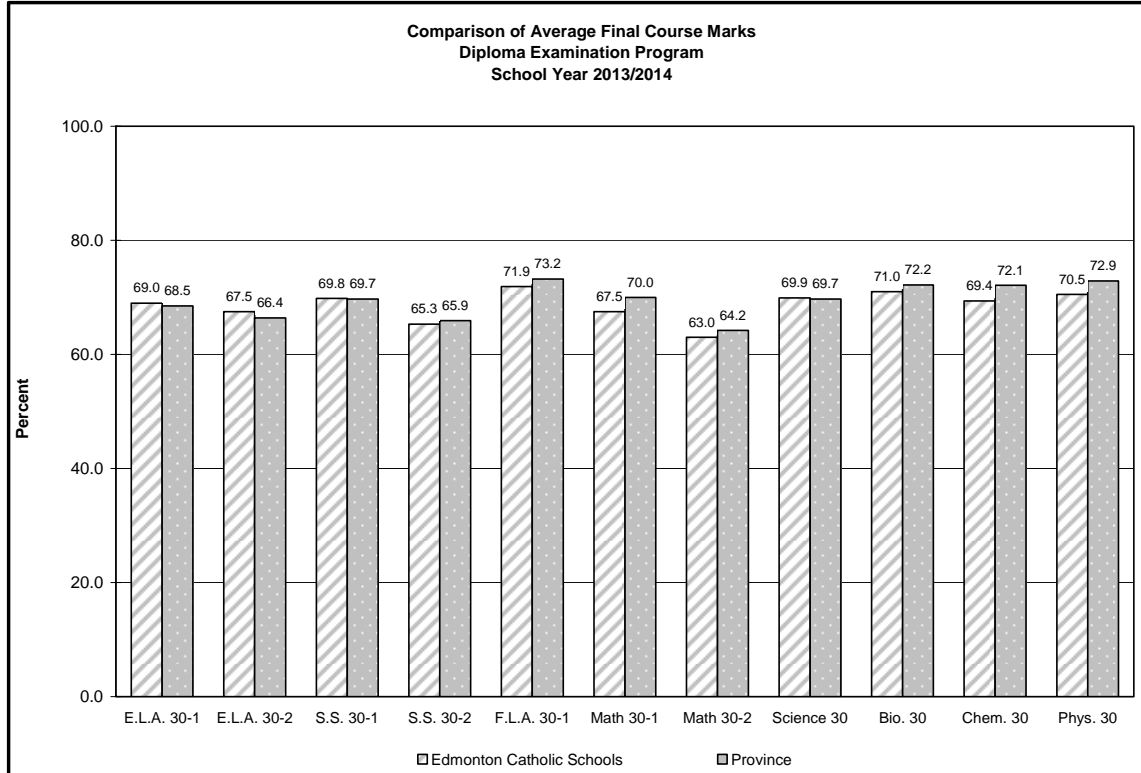
The percentage of students in Edmonton Catholic Schools achieving the Acceptable Standard and the Standard of Excellence in the Diploma Examination subjects were compared with provincial averages (Table 2 in Appendix A).

- ACCEPTABLE STANDARD**
- *Acceptable Standard* is the achievement of a **mark of 50% or greater**.
 - The percentage of Edmonton Catholic students achieving the *Acceptable Standard* **exceeded** the provincial percentage in the
 - **School-Awarded** Results in:
 - English Language Arts 30-1
 - English Language Arts 30-2
 - Social Studies 30-1
 - Social Studies 30-2
 - Biology 30
 - Science 30
 - **Diploma Examination** Results in:
 - English Language Arts 30-1
 - English Language Arts 30-2
 - Social Studies 30-1
 - Social Studies 30-2
 - Mathematics 30-2
 - Science 30
 - **Final Course** Results in:
 - English Language Arts 30-1
 - English Language Arts 30-2
 - Social Studies 30-1
 - Social Studies 30-2
 - Biology 30
 - Science 30
 - In considering the *Acceptable Standard* for the final course results, Edmonton Catholic Schools exceeded the province the most in English Language Arts 30-2 (2.3%).

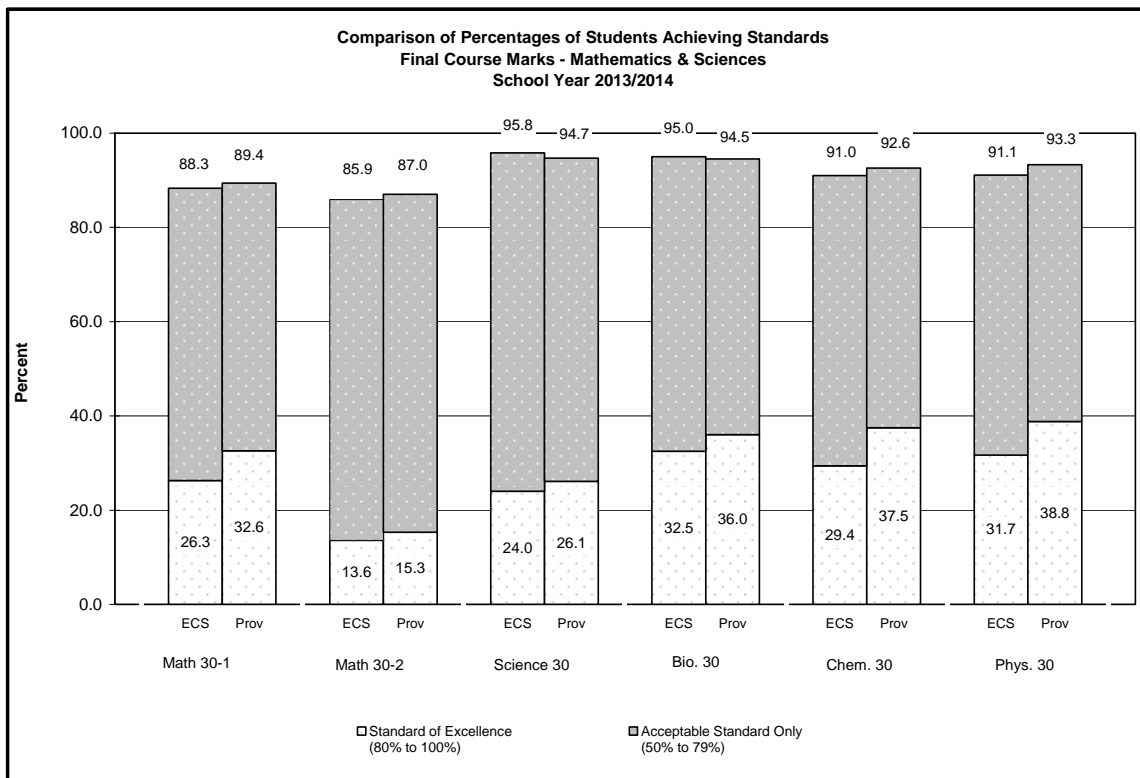
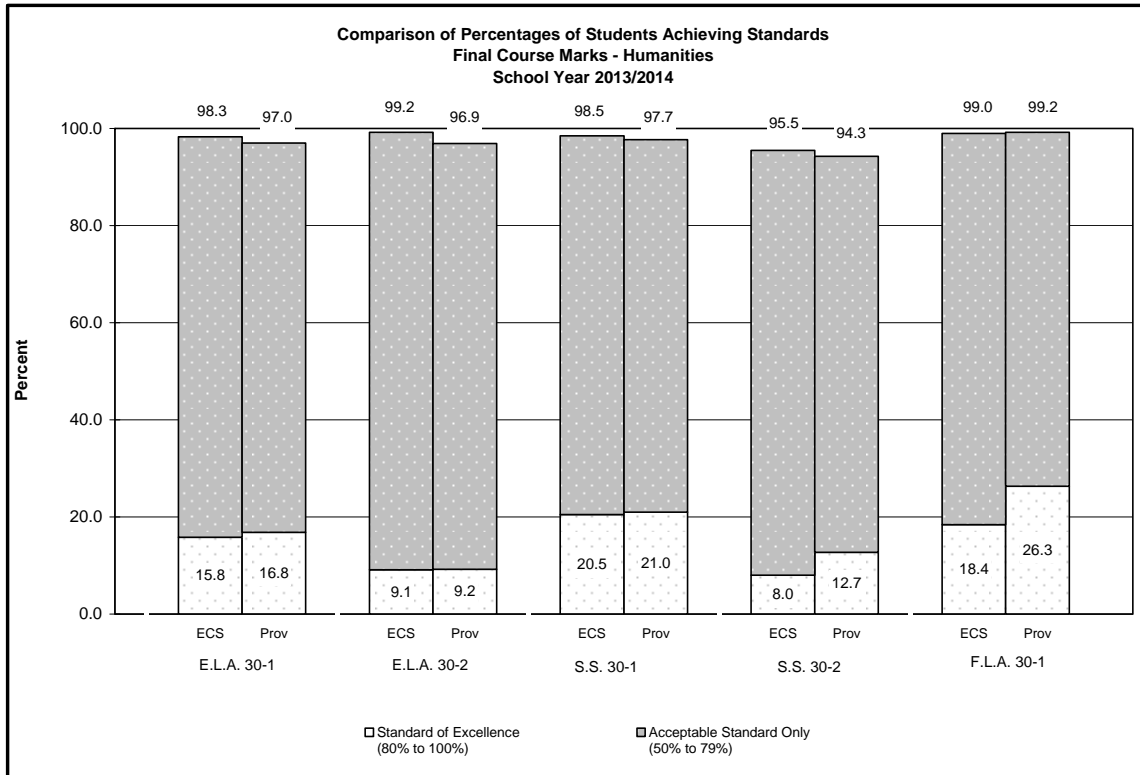
- STANDARD OF EXCELLENCE**
- *Standard of Excellence* is the achievement of a **mark of 80% or greater**.
 - The percentage of Edmonton Catholic students achieving the *Standard of Excellence* **exceeded** the provincial percentage in the
 - **School-Awarded** Results in:
 - English Language Arts 30-2
 - **Diploma Examination** Results in:
 - English Language Arts 30-1
 - English Language Arts 30-2
 - Mathematics 30-2
 - Science 30

School-Awarded, Diploma, and Final Course Marks – 2013/2014





Acceptable Standard and Standard of Excellence Final Course Results – 2013/2014



4. FIVE YEAR SUMMARY OF THE DIPLOMA EXAMINATION RESULTS

The percentages of students in Edmonton Catholic Schools achieving the acceptable standard and the standard of excellence in each subject area were compared with the province over the past five years (Tables 3, 4, and 5 in Appendix A). In considering these trends, please note that this is the second year for results for Mathematics 30-1 and Mathematics 30-2.

SCHOOL-AWARDED RESULTS

- For at least each of the past **five** years **Edmonton Catholic Schools** has **exceeded** the province in respect to:
 - English Language Arts 30-1 – Acceptable Standard
 - English Language Arts 30-2 – Acceptable Standard
 - English Language Arts 30-2 – Standard of Excellence
 - Social Studies 30-1 – Acceptable Standard
 - Social Studies 30-2 – Acceptable Standard
 - Biology 30 – Acceptable Standard
 - Science 30 – Acceptable Standard

DIPLOMA EXAMINATION RESULTS

- For at least each of the past **five** years **Edmonton Catholic Schools** has **exceeded** the province in respect to:
 - English Language Arts 30-1 – Acceptable Standard
 - English Language Arts 30-2 – Acceptable Standard
 - English Language Arts 30-2 – Standard of Excellence
 - Social Studies 30-1 – Acceptable Standard
 - Social Studies 30-2 – Acceptable Standard
- For each of the past **two** years **Edmonton Catholic Schools** has **exceeded** the province in respect to:
 - Mathematics 30-2 – Acceptable Standard
 - Mathematics 30-2 – Standard of Excellence
- This year **Edmonton Catholic Schools** also **exceeded** the province in respect to:
 - English Language Arts 30-1 – Standard of Excellence
 - Science 30 – Acceptable Standard
 - Science 30 – Standard of Excellence

FINAL COURSE RESULTS

- For at least each of the past **five** years **Edmonton Catholic Schools** has **exceeded** the province in respect to:
 - English Language Arts 30-1 – Acceptable Standard
 - English Language Arts 30-2 – Acceptable Standard
 - Social Studies 30-1 – Acceptable Standard
 - Social Studies 30-2 – Acceptable Standard
- For each of the past **four** years **Edmonton Catholic Schools** has **exceeded** the province in respect to:
 - Science 30 – Acceptable Standard
- For each of the past **three** years **Edmonton Catholic Schools** has **exceeded** the province in respect to:
 - Biology 30 – Acceptable Standard

Overall, Edmonton Catholic Schools' students have continued to exceed the province in a number of courses over time.

APPENDIX A

DIPLOMA EXAMINATION PROGRAM RESULTS 2013/2014

- **Table 1 – Numbers of Students and Average Marks in Diploma Examination Subjects**
- **Table 2 – Percentages of Students Achieving the Acceptable Standard and the Standard of Excellence in Diploma Examination Subjects**
- **Table 3 – School-Awarded Marks – Acceptable Standard and Standard of Excellence – Five Years of Multiyear Results**
- **Table 4 – Diploma Examination Marks – Acceptable Standard and Standard of Excellence – Five Years of Multiyear Results**
- **Table 5 – Final Course Marks – Acceptable Standard and Standard of Excellence – Five Years of Multiyear Results**
- **Table 6 – Participation Rates – Percentage of Third Year Students Writing One or More Diploma Exams – Five Years of Multiyear Results**

EDMONTON CATHOLIC SCHOOLS

Table 1
Numbers of Students and Average Marks in Diploma Examination Subjects
2013/2014 School Year

Subject	Number of Students		School-Awarded Mark		Diploma Examination Mark		Final Course Mark	
	ECS	Province	ECS	Province	ECS	Province	ECS	Province
English Language Arts 30-1	1629	28671	72.6	72.2	65.0	64.1	69.0	68.5
English Language Arts 30-2	953	15887	67.6	66.2	66.8	65.9	67.5	66.4
Social Studies 30-1	1499	21992	74.9	74.4	64.2	64.5	69.8	69.7
Social Studies 30-2	973	19173	67.3	66.7	62.8	64.3	65.3	65.9
Mathematics 30-1	1288	21314	73.3	75.6	61.1	63.9	67.5	70.0
Mathematics 30-2	625	11934	65.1	67.5	60.2	60.1	63.0	64.2
Science 30	501	7103	71.0	71.1	68.1	67.5	69.9	69.7
Biology 30	1280	21656	73.5	74.7	68.0	68.9	71.0	72.2
Chemistry 30	1116	19118	72.0	75.3	66.1	68.2	69.4	72.1
Physics 30	575	10758	72.6	76.4	67.8	68.8	70.5	72.9
French Language Arts 30-1	98	1210	77.4	77.8	65.8	68.2	71.9	73.2

Table 2
Percentages of Students Achieving the Acceptable Standard
and the Standard of Excellence in Diploma Examination Subjects
2013/2014 School Year

Subject	School-Awarded				Diploma Examination				Final Course			
	Standard of Excellence		Acceptable Standard		Standard of Excellence		Acceptable Standard		Standard of Excellence		Acceptable Standard	
	ECS	Prov	ECS	Prov	ECS	Prov	ECS	Prov	ECS	Prov	ECS	Prov
English Language Arts 30-1	27.1	30.7	98.8	97.3	12.6	11.7	89.7	87.1	15.8	16.8	98.3	97.0
English Language Arts 30-2	14.4	13.5	97.5	94.6	13.5	13.1	92.7	89.7	9.1	9.2	99.2	96.9
Social Studies 30-1	36.9	37.6	99.7	98.6	13.2	14.2	86.3	85.5	20.5	21.0	98.5	97.7
Social Studies 30-2	13.4	17.0	97.0	94.2	9.5	14.8	84.7	83.9	8.0	12.7	95.5	94.3
Mathematics 30-1	38.4	46.2	95.0	95.7	21.9	27.2	70.1	74.6	26.3	32.6	88.3	89.4
Mathematics 30-2	13.9	21.1	90.9	92.8	16.2	15.0	71.7	71.3	13.6	15.3	85.9	87.0
Science 30	27.7	32.1	97.8	95.0	25.9	25.5	86.6	85.1	24.0	26.1	95.8	94.7
Biology 30	38.4	43.7	97.6	96.2	30.1	31.7	83.9	85.2	32.5	36.0	95.0	94.5
Chemistry 30	32.3	46.2	95.6	96.4	30.6	35.0	78.8	81.3	29.4	37.5	91.0	92.6
Physics 30	33.0	49.7	96.0	96.4	32.7	34.1	82.4	83.0	31.7	38.8	91.1	93.3
French Language Arts 30-1	48.0	50.7	99.0	99.2	8.2	14.5	94.9	96.5	18.4	26.3	99.0	99.2

Table 3
School-Awarded Marks
Acceptable Standard and Standard of Excellence
Five Years of Multiyear Results

Subject	Standard	2009/10		2010/11		2011/12		2012/13		2013/14	
		ECS	Prov	ECS	Prov	ECS	Prov	ECS	Prov	ECS	Prov
English Language Arts 30-1	Acceptable	98.9	96.6	99.0	96.5	99.2	97.3	99.0	97.2	98.8	97.3
	Excellence	36.2	31.1	33.0	30.5	32.7	30.6	30.6	30.7	27.1	30.7
English Language Arts 30-2	Acceptable	97.7	92.1	97.2	92.0	98.0	93.4	96.6	93.8	97.5	94.6
	Excellence	11.9	9.9	12.3	10.3	12.0	11.1	12.9	11.8	14.4	13.5
Social Studies 30-1	Acceptable	99.4	98.3	99.7	98.1	99.8	98.5	99.5	98.6	99.7	98.6
	Excellence	36.0	34.7	35.9	35.2	36.2	35.9	35.1	37.7	36.9	37.6
Social Studies 30-2	Acceptable	96.3	92.7	97.9	93.3	97.1	94.1	97.2	94.3	97.0	94.2
	Excellence	8.8	11.5	9.9	12.3	13.8	13.9	12.9	15.2	13.4	17.0
Mathematics 30-1	Acceptable	N/A	N/A	N/A	N/A	N/A	N/A	96.1	95.9	95.0	95.7
	Excellence	N/A	N/A	N/A	N/A	N/A	N/A	38.4	44.2	38.4	46.2
Mathematics 30-2	Acceptable	N/A	N/A	N/A	N/A	N/A	N/A	91.7	91.5	90.9	92.8
	Excellence	N/A	N/A	N/A	N/A	N/A	N/A	14.2	18.9	13.9	21.1
Science 30	Acceptable	95.5	94.5	96.3	94.6	96.8	95.4	97.2	95.0	97.8	95.0
	Excellence	15.1	24.6	23.2	26.5	21.1	28.0	22.1	31.1	27.7	32.1
Biology 30	Acceptable	97.5	95.8	97.1	95.9	97.9	96.1	97.2	96.1	97.6	96.2
	Excellence	39.2	39.7	38.3	40.7	34.8	42.0	34.8	42.9	38.4	43.7
Chemistry 30	Acceptable	95.8	95.5	96.3	95.4	96.9	95.9	96.3	95.4	95.6	96.4
	Excellence	32.3	41.5	36.5	41.7	33.4	42.6	34.9	41.9	32.3	46.2
Physics 30	Acceptable	96.2	96.8	96.1	96.1	97.8	96.5	96.2	96.2	96.0	96.4
	Excellence	37.0	45.1	35.0	44.8	35.5	46.0	39.9	45.6	33.0	49.7
French Language Arts 30-1	Acceptable	100	99.1	100	99.1	95.5	98.8	100	99.1	99.0	99.2
	Excellence	34.2	52.0	56.0	52.0	31.3	48.3	61.8	47.9	48.0	50.7

Table 4
Diploma Examination Marks
Acceptable Standard and Standard of Excellence
Five Years of Multiyear Results

Subject	Standard	2009/10		2010/11		2011/12		2012/13		2013/14	
		ECS	Prov	ECS	Prov	ECS	Prov	ECS	Prov	ECS	Prov
English Language Arts 30-1	Acceptable	87.9	84.9	87.6	84.4	91.1	86.0	89.6	85.7	89.7	87.1
	Excellence	11.1	10.1	9.2	10.1	11.3	11.3	10.0	10.3	12.6	11.7
English Language Arts 30-2	Acceptable	91.3	88.8	91.0	88.6	94.3	89.5	93.0	89.3	92.7	89.7
	Excellence	11.9	9.8	10.4	9.1	12.3	10.7	11.5	11.0	13.5	13.1
Social Studies 30-1	Acceptable	88.0	84.5	87.5	82.8	89.7	86.2	88.2	85.3	86.3	85.5
	Excellence	20.4	16.1	15.3	14.9	15.5	16.7	13.9	15.2	13.2	14.2
Social Studies 30-2	Acceptable	86.7	85.0	88.6	85.6	84.7	83.0	84.4	82.1	84.7	83.9
	Excellence	14.6	13.7	14.2	15.9	15.0	13.7	10.0	13.8	9.5	14.8
Mathematics 30-1	Acceptable	N/A	N/A	N/A	N/A	N/A	N/A	80.4	80.6	70.1	74.6
	Excellence	N/A	N/A	N/A	N/A	N/A	N/A	31.0	35.5	21.9	27.2
Mathematics 30-2	Acceptable	N/A	N/A	N/A	N/A	N/A	N/A	69.9	69.1	71.7	71.3
	Excellence	N/A	N/A	N/A	N/A	N/A	N/A	11.0	9.6	16.2	15.0
Science 30	Acceptable	79.2	80.1	81.3	80.3	80.6	79.8	82.2	84.0	86.6	85.1
	Excellence	21.5	22.8	22.0	20.9	21.1	22.0	21.0	25.8	25.9	25.5
Biology 30	Acceptable	80.8	81.4	80.5	81.9	81.4	81.8	83.0	84.3	83.9	85.2
	Excellence	25.5	28.1	28.8	29.9	25.5	28.1	28.1	32.1	30.1	31.7
Chemistry 30	Acceptable	77.9	79.0	76.1	75.1	73.6	76.7	77.2	78.6	78.8	81.3
	Excellence	24.9	29.9	24.8	27.7	22.5	28.4	28.6	31.6	30.6	35.0
Physics 30	Acceptable	73.2	74.0	78.1	76.7	80.7	81.0	81.0	81.3	82.4	83.0
	Excellence	17.2	20.4	28.0	27.7	24.1	30.3	28.5	30.2	32.7	34.1
French Language Arts 30-1	Acceptable	84.2	93.7	89.3	95.3	91.0	95.5	92.7	95.3	94.9	96.5
	Excellence	7.9	16.3	2.7	14.4	4.5	13.4	9.1	12.5	8.2	14.5

Table 5
Final Course Marks
Acceptable Standard and Standard of Excellence
Five Years of Multiyear Results

Subject	Standard	2009/10		2010/11		2011/12		2012/13		2013/14	
		ECS	Prov	ECS	Prov	ECS	Prov	ECS	Prov	ECS	Prov
English Language Arts 30-1	Acceptable	98.6	96.6	98.3	96.5	98.9	97.1	98.6	97.0	98.3	97.0
	Excellence	17.1	15.3	16.0	15.4	16.6	16.1	14.7	15.6	15.8	16.8
English Language Arts 30-2	Acceptable	98.7	95.8	97.7	95.7	99.4	96.4	98.2	96.3	99.2	96.9
	Excellence	7.0	6.2	7.0	6.2	9.4	7.3	8.0	7.6	9.1	9.2
Social Studies 30-1	Acceptable	98.8	97.3	98.8	96.9	99.3	97.7	98.4	97.7	98.5	97.7
	Excellence	25.1	21.2	21.8	20.5	21.2	22.2	20.7	22.0	20.5	21.0
Social Studies 30-2	Acceptable	96.6	94.5	97.3	95.0	97.0	94.7	95.6	94.1	95.5	94.3
	Excellence	8.7	9.1	8.9	10.6	12.3	10.8	8.1	11.2	8.0	12.7
Mathematics 30-1	Acceptable	N/A	N/A	N/A	N/A	N/A	N/A	91.9	91.7	88.3	89.4
	Excellence	N/A	N/A	N/A	N/A	N/A	N/A	32.0	37.9	26.3	32.6
Mathematics 30-2	Acceptable	N/A	N/A	N/A	N/A	N/A	N/A	85.8	86.4	85.9	87.0
	Excellence	N/A	N/A	N/A	N/A	N/A	N/A	9.3	10.6	13.6	15.3
Science 30	Acceptable	91.2	92.3	94.6	93.1	92.5	92.4	95.5	93.9	95.8	94.7
	Excellence	13.0	20.9	20.1	21.2	17.7	21.9	18.9	25.7	24.0	26.1
Biology 30	Acceptable	94.1	93.0	91.9	93.1	94.2	93.6	94.3	94.2	95.0	94.5
	Excellence	29.9	31.6	31.3	32.9	28.7	32.8	30.0	35.7	32.5	36.0
Chemistry 30	Acceptable	90.8	91.0	90.0	89.7	90.5	90.5	91.3	91.2	91.0	92.6
	Excellence	26.2	33.4	26.4	31.2	23.6	32.2	29.3	33.6	29.4	37.5
Physics 30	Acceptable	91.8	91.5	91.5	90.9	93.3	92.4	93.5	92.6	91.1	93.3
	Excellence	23.6	26.7	28.3	31.6	27.1	34.4	30.0	34.1	31.7	38.8
French Language Arts 30-1	Acceptable	100	99.6	100	99.4	95.5	99.2	98.2	99.2	99.0	99.2
	Excellence	17.1	28.2	16.0	25.9	13.4	23.8	18.2	23.4	18.4	26.3

Table 6
Participation Rates
Percentage of Third Year Students Writing One or More Diploma Exams
Five Years of Multiyear Results

Subject	2009/10		2010/11		2011/12		2012/13		2013/14	
	Prov	ECS	Prov	ECS	Prov	ECS	Prov	ECS	Prov	ECS
Total Number of Students	45478	2500	44714	2513	44909	2656	44977	2483	44046	2624
English Language Arts 30-1	54.5	55.3	54.9	54.8	55.2	55.7	54.4	55.7	54.4	57.7
English Language Arts 30-2	25.1	24.6	26.1	28.4	26.1	30.5	27.2	30.5	28.2	30.6
Total of 1 or more English Exams	78.0	78.6	79.0	81.4	79.3	83.5	79.3	83.5	80.3	84.4
Social Studies 30	3.7	6.5	0.3	0.5	0.0	0.0	N/A	N/A	N/A	N/A
Social Studies 30-1	45.7	46.6	48.2	51.1	48.0	53.8	46.1	50.9	45.5	54.8
Social Studies 33	2.5	1.9	0.1	0.1	0.0	0.0	N/A	N/A	N/A	N/A
Social Studies 30-2	27.4	25.0	31.0	30.5	32.1	30.2	34.0	33.2	35.5	31.3
Total of 1 or more Social Exams	78.1	79.1	78.9	81.5	79.4	83.4	79.3	83.1	80.2	85.2
Pure Mathematics 30	41.4	45.1	42.6	46.9	42.5	45.8	7.3	9.6	0.1	0.0
Applied Mathematics 30	19.7	16.2	20.0	19.3	19.6	18.2	0.2	0.3	0.0	0.0
Mathematics 30-1	N/A	N/A	N/A	N/A	N/A	N/A	30.0	35.9	37.6	42.6
Mathematics 30-2	N/A	N/A	N/A	N/A	N/A	N/A	16.9	18.6	21.6	21.9
Total of 1 or more Math Exams	60.6	60.6	62.0	65.7	61.5	63.5	52.5	61.8	57.4	62.7
Biology 30	41.2	43.5	42.8	43.3	43.1	43.3	42.5	42.2	41.7	44.1
Chemistry 30 Old	0.1	0.2	N/A	N/A	N/A	N/A	N/A	N/A	N/A	N/A
Chemistry 30	35.2	38.9	36.0	38.2	36.7	37.2	31.7	36.6	35.0	38.4
Physics 30 Old	0.1	0.0	N/A	N/A	N/A	N/A	N/A	N/A	N/A	N/A
Physics 30	20.0	21.2	20.6	20.8	20.4	19.9	17.4	20.1	20.2	19.4
Science 30	9.0	11.7	9.1	15.1	10.5	15.9	9.9	18.3	13.0	17.8
Total of 1 or more Science Exams	57.6	60.5	59.1	62.7	59.5	62.5	57.7	63.8	59.8	63.5
Français 30-1	0.2	0.0	0.3	0.0	0.3	0.0	0.3	0.0	0.3	0.0
French Language Arts 30-1	2.9	3.0	2.8	3.0	2.7	2.5	2.7	2.3	2.7	3.5
Total of 1 or more French Exams	3.1	3.0	3.1	3.0	2.9	2.5	3.0	2.3	2.9	3.5